



OC2

OC3

features at a glance ■ ■ ■

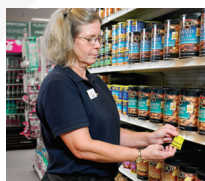
- **Compact design:** Streamlined design makes the OC3 35% smaller than the closest competition
- **Fast printing:** Advanced 32-bit architecture RISC processor for light-speed processing
- **Easy to use:** LED lights indicate Bluetooth, charging and power status, and an external DC jack allows for easy charging
- **Options:** Receipt or label printing capability and Bluetooth or 802.11b/g connectivity
- **Compatibility:** Supports a wide variety of hand-held computers from leading manufacturers
- **Swipe-style card reader:** print receipts and process payments in the field
- **Graphics:** Supports the printing of graphics, 1D bar codes, 2D symbologies, and signature capture
- **Endurance:** Intelligent power management and programmable sleep mode for extended battery life
- **Battery:** Unlike competitors' printers, the battery is included in the purchase price. And when its time to replace the battery, the OC printers use economical replacement batteries
- **Charging options:** External charge contacts, AC adapter, or 12V vehicle cigarette lighter adapter
- **Warranty:** Comes with the industry's only two-year standard warranty - twice that of the competition!

Compact and Ergonomic ■ ■ ■

The OC is the world's most streamlined, light weight, and ergonomic family of portable label and receipt printers. Designed especially for those labeling and transaction applications where ergonomic considerations, ultimate portability, and smart looks are paramount, the OC is ideal to meet the continually expanding requirements associated with retail, healthcare, hospitality, transportation, and field mobile service applications.

The advanced features, standard with any OC printer, offer extreme adaptability to meet the unique and industry specific portable printing requirements demanded in today's evolving business environment. Simple charging solutions and drop-in media loading allow entry level associates to use the printer with no downtime. The OC is compatible with a wide selection of media including labels, hang tags, shelf tags, and receipt paper. The OC is available in 2-inch and 3-inch widths and offers an optional magnetic stripe card reader. For wireless communication, the OC can be purchased with 802.11b/g or Bluetooth connectivity and offers a broad range of security and encryption protocols that are compatible with today's high-tech security requirements.

popular applications ■ ■ ■



Retail

- Item Labels
- Shelf Tags
- Specials and Talkers
- Returns Labeling/Tagging



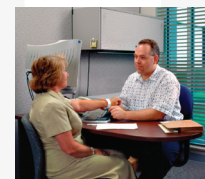
Field Service

- Service Receipts
- Pickups/Deliveries
- Maintenance
- Settlement Reports



Mobile POS

- Transaction Receipts
- Rain Checks
- Coupons
- Queue Busting



Healthcare

- Patient ID Wristbands
- Asset Identification
- Specimen Tracking
- Records Labeling

your benefits ■ ■ ■

Safe and secure – In the storefront, at the office, in the warehouse, and on the road, wireless technology is a critical tool for conducting business. To help ensure that your wireless transactions are secure, the OC offers a broad range of security and encryption protocols that are compatible with today's high-tech security requirements.

Reliable performance saves you money – In today's tough economic times you can't afford to buy printers that fail. The OC comes with Datamax-O'Neil's legendary reliability and the industry's only standard two-year warranty for mobile printers. The OC warranty includes the printer and even the printhead (when used with approved media grades).

Did you know?

Using quality labels and paper can significantly prolong the life of your printhead. Datamax-O'Neil offers a wide variety of high quality media for its printers including custom and stock labels and receipts, ticketing media, and cleaning products. When you choose Datamax-O'Neil, you receive a proven commitment to superior quality. Quality that results in performance and compatibility... Guaranteed.



datamax • o'neil
right by our customers.



OC2 Receipt Printer

The OC2 is a light weight, and ergonomic thermal receipt printer that comes with an optional built-in magnetic stripe card reader for the easy processing of credit or debit card payments. The OC2 generates receipts up to 2.25 inches wide, and addresses the requirements associated with point-of-sale and on-demand transaction activities.



OC3 Label Printer

The OC3 Label Printer is a portable thermal printer with a variable width setting that allows you to print on label media from 1 to 3 inches wide. It is ideal for generating price, markdown and shelf labels via wireless or serial connectivity. The OC is also the first commercially available portable thermal printer to support SafeD-Band™ direct thermal wristbands for bedside and mobile patient identification.



OC3 Receipt Printer

The OC3 Receipt Printer generates receipts on media up to 3.15 inches wide and offers optional wireless and serial connectivity. Use the OC3 for mobile point-of sale and line/queue-busting where it can print receipts and process payments with its integrated magnetic stripe card reader. The OC3's 3.15-inch format also makes it a popular choice for law enforcement applications.

Communication Options

Serial, Bluetooth, 802.11b/g

Serial, Bluetooth, 802.11b/g

Serial, Bluetooth, 802.11b/g

Dimensions

5.19w" x 4.9h" x 2.75d"
(131.8 x 124.5 x 69.85 mm)

6.54w" x 4.91h" x 2.75d"
(166.1 x 124.7 x 69.85 mm)

Weight (with battery)

15.2 oz (0.43 kg)

21.28 oz (0.60 kg)

23.6 oz (0.67 kg)

Weight (with battery and paper roll)

21.60 oz (0.61 kg)

27.68 oz (0.78 kg)

30 oz (0.85 kg)

Print Speed

3" per second (76.2 mm per second)

2" per second (50.8 mm per second)

Media Type

Direct thermal receipt paper: standard, premium, heavy duty, long-life, image protect, hi-temp, all weather, synthetic, UV coated

0.75" - 3" lined labels with Q-mark or gap sensing; 2" hang tags

Direct thermal receipt paper: standard, premium, heavy duty, long-life, image protect, hi-temp, all weather, synthetic, UV coated

Maximum Print Width

1.89" (48 mm)

2.84" (72 mm)

Media Roll Width

2.25" (57 mm)

1" - 3" (25.4 mm - 76.2 mm)

3.15" (80 mm)

Media I.D. Core

0.4" (10 mm)

0.4" (10 mm) / 0.75" (19 mm) / 1" (25 mm)

0.4" (10 mm)

Media Thickness

0.002" (0.05 mm) min; 0.007" (0.18 mm) max

0.002" (0.05 mm) min; 0.006" (0.15 mm) max

Endurance (on a single battery charge)

Prints up to approx. 6,522" or 1,087 - 6" receipts

Prints up to approx. 5,304 - 2" x 1.125" labels

Prints up to approx. 5,166" or 861 - 6" receipts

product specifications ■ ■ ■

physical characteristic ■ ■ ■

- Drop specification:
 - 4 ft. (1.22 m)

user environment ■ ■ ■

- Operating temperature:
 - -4° F to 122° F (-20° C to 50° C)
- Storage temperature:
 - -40° F to 158° F (-40° C to 70° C)
- Charging temperature:
 - 41° F to 104° F (5° C to 40° C)
- Relative humidity:
 - 10% to 90% non-condensing
- ESD protection:
 - 15 kV Air, 8 kV contact

print technology ■ ■ ■

- Printhead:
 - Direct thermal
 - 203 dots per inch (8 dots per mm)

media ■ ■ ■

- Maximum media roll capacity:
 - 2.25" (57 mm) max roll diameter (O.D.)
- For optimum print quality and printer performance, use Certified Datamax-O'Neil supplies

Safe-D Band™ Wristbands

SafeD-Band direct thermal wristbands are the perfect solution for your patient identification and patron management applications. With its durable latex-free polypropylene face stock and polyethylene liner, Datamax-O'Neil SafeD-Bands provide unmatched image quality and durability.

Trust your patient safety and patron management initiatives to a leader in thermal printing technology.

More info: www.datamax-oneil.com/supplies

communication ■ ■ ■

- Serial:
 - RS-232; up to 460.8 kbps
- USB:
 - 2.0 (full speed)
- 802.11 b/g:
 - Frequency band: 2.4 to 2.4897 GHz
 - Data rates: Standard 802.11b/g rates
 - Network standard: IEEE 802.11b/g
 - Wireless access modes: Infrastructure and ad hoc
 - Security protocols:

	WPA	WPA2
Modes	PSK/Enterprise	
Security/Encryption	TKIP/RC4	CCMP/AES
Authentication	EAP-FAST, EAP-PEAP, EAP-TTLS	

- Network support: DHCP, TCP, UDP, BOOTP
- Remote management support: Compatible with the Remote Management Software and other remote management systems
- Bluetooth:
 - Network environment: Ad hoc
 - Supported versions: v1.2 (compatible with v1.1 devices)

power source ■ ■ ■

- Battery:
 - (1) 7.2V Lithium-ion (Li-ion), 2200 mAh
- DC Inputs:
 - External DC jack, 12-15V, built-in spike and surge protection
 - External charge contacts, 12-15V, built-in spike and surge protection
- Recharging:
 - 3.5-4.5 hours from AC adapter or cigarette adapter

agency approval ■ ■ ■

Contact sales manager for the most current approval list

barcodes/fonts/graphics ■ ■ ■

- Standard fonts:
 - 5.5CPI, 7.2CPI, 10.2 CPI, 10.7CPI, 18.5CPI 20.4CPI, 22.6CPI & 34.0CPI (additional fonts available)
- Optional characters:
 - Arabic, Greek, Hebrew, OCRA, OCRB, Unicode subset including Latin & Thai
 - Asian (including Big 5, Simplified Chinese, and Shift JIS); additional international characters available)
- Barcodes:
 - Linear: Codabar, Code 39, Code 93, Code 128, EAN-8, EAN13, Interleaved 2 of 5, MSI/Plessey, UCC/EAN-128, UPC-A, UPC-E
 - 2D Symbolologies: PDF417, AZTEC, QR, GS1, Datamatrix (available on wireless only)
- Graphics:
 - Supports storage of graphics/logos in Flash memory and transient "print once" graphics

software ■ ■ ■

- Protocol:
 - Line Printer Mode, Easy Print®
- Device management:
 - Remote Management Software (RMS), Wavelink Avalanche MC, Motorola MSP
- Drivers:
 - Windows CE and Desktop
- Label designers:
 - NiceLabel, BarTender®, DP Designer
- Software development kit:
 - C++, Visual Basic, Microsoft Dynamics, BlackBerry

options ■ ■ ■

- Wireless communication
- Magnetic stripe card reader

warranty ■ ■ ■

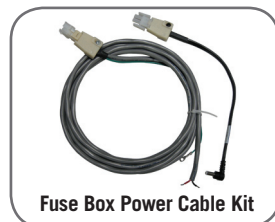
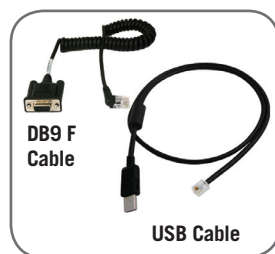
2 years (including printer case and printhead) when used with approved media grades



Looking for a desktop label printer?

Datamax-O'Neil manufactures an extensive selection of desktop label printers that are ideal for manufacturing, warehouse, healthcare, ticketing, postal services and RFID labeling requirements. Competitive custom and standard media products are also available for all your label, receipt and ticketing needs.





Included with each OC printer: (1) battery, (1) roll of media, and (1) swivel belt clip

required ■ ■ ■

AC Adapter	AC Adapter available with US, UK, Australia, or Euro plugs
------------	--

recommended ■ ■ ■

Cigarette Lighter Adapter	Allows you to charge the printer from the vehicle cigarette lighter
DB9 F Serial/Configuration Cable	DB9 F coiled right angle cable for connecting to a laptop or desktop computer
USB Cable	DB9 right angle USB download cable
Desktop Charger	Allows you to charge (1) OC printer; AC adapter must be ordered separately
Swivel Mount Bracket	Can be wall mounted or mounted in the vehicle to securely hold the printer in place; available in standard, e-charge and card reader configurations; additional charging cables must be used to charge printer - compatible with AC, cigarette lighter cables and fuse box cables (not included)
Cleaning Cards & Kits	Use of cleaning cards is recommended to extend the life of the printhead (visit www.datamax-oneil.com/supplies for more information)

optional ■ ■ ■

Serial Cables for Mobile Computers	DB9 F coiled right angle download cables are compatible with a variety of popular mobile computers; see price list for a specific model compatibility and part number
5-Bay Depot Charger Kit	Allows you to charge (5) OC printers; includes an AC adapter
4-Bay Depot Charger Kit	Allows you to charge (4) OC printers and 2 batteries; includes an AC adapter
Spare Battery	Lithium-Ion, 7.2V, 2200mAh
Double Bay Battery Charger	2-bay battery charger keeps additional batteries charged and ready for use
Fuse Box Power Cable Kit, 10'	Charge your printer from a vehicle's fuse box Extension cables available in 3', 6', and 10' lengths for existing installations
IP54 Soft Cases	Protects your printer from environmental elements such as dust and moisture; meets IP54 compliance standards
Swivel Mount Belt Clip	Clip slips into the waistband and holds the printer in place; keeps the printer secure yet swivels for comfort while bending over or getting in and out of trucks (comes standard on all OC models)
Swivel Mount Shoulder Strap	Adjustable strap allows the user to comfortably carry the printer on the shoulder; keeps the printer secure yet swivels for ease of motion

to learn more, visit www.datamax-oneil.com

We reserve the right to amend the design and/or specifications of our products without notice.