

Consumer appealing yet industry proven

With Multitouch panel – optimized for displaying office documents



- Windows® Embedded Handheld 6.5
- 3.7 inch capacitive multitouch display
- IP54 and 1.5m drop resistance
- Pocket size - 215g light weight
- Consumer appealing yet industry proven

CASIO®



The IT-300 hand-held business computer is a robust industry PDA that combines simple, intuitive usability with investment protection and the robustness of an industrial hand-held device. The large capacitive colour display can be operated without a stylus and is optimised for displaying PDF documents and office

applications. Therefore the IT-300 is, the ideal companion in day-to-day business. It opens up completely new methods of communication and collaboration with the management as well as with all other hierarchy levels – for example in the retail / POS, healthcare and service sectors.



Slimline design and intuitive operation including multi-touch display

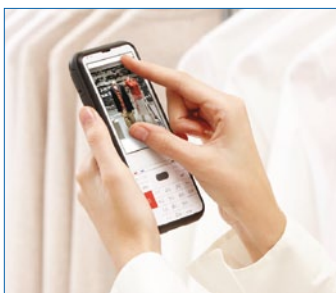
Data is either entered via the alphanumeric keypad – in the same way as with a mobile phone – or very conveniently via the large capacitive multi-touch display. Users can zoom in and out and scroll or rotate displayed documents quickly and easily by touching the display with their fingertips. The work without a stylus makes the usage of the device particularly convenient.

The 3.7 inch BlanView® TFT display with 480x640 pixels offers a crystal clear view in full VGA resolution. It can be read easily in darkness as well as in glaring sunlight and displays extensive PDF documents, EXCEL® tables, Powerpoint® presentations, graphics and photos, as well as videos (MPEG4/WMV).

Original display size (2.2x3.0 inch)

Robust enough for tough working conditions

With 1.5-metre drop resistance onto concrete, splash and dust protection in accordance with IP54 and a working temperature between -20° and +50°C, the IT-300 withstands the challenges of the day-to-day work in a number of areas, regardless if it is used indoors or outdoors



Human-centered Design

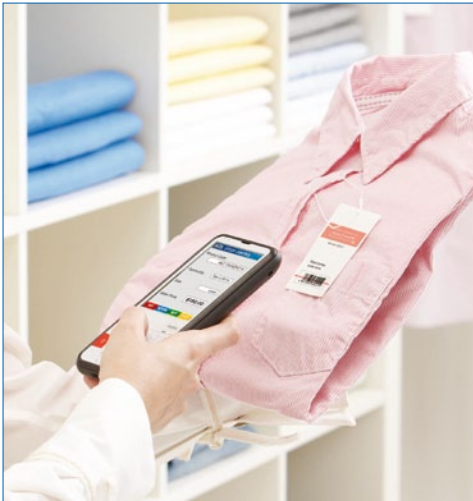
The small, light and particularly flat hand-held device fits in the pocket of any shirt or work outfit. Developed in accordance with ISO13407 guidelines of Human-centered Design processes, the terminal fits safely and comfortably in the user's hand thanks to its rounded corners.



Long battery life and fast operational readiness

The IT-300 is supplied with a powerful lithium-ion battery. Low power consumption was also particularly important. Intelligent power management, the Wireless Standby Mode – where the device is switched off with the exception of the wireless communication functions – and the Quick Start Function

from the power-saving mode into operational readiness enable long battery lives of around 10 hours, as well as fast availability, thereby enabling the user to work more efficiently and provide a better customer service.



Versatile software solutions available

The IT-300 operates on Windows® Embedded Handheld 6.5. This means that there is a number of useful applications available to customize the device to the relevant tasks. The Windows®-

based development environment guarantees investment security and provides the possibility of tailor made applications for specific uses.

Ready-to-use bundle delivered as standard

For the first time, CASIO is offering the IT-300 as a complete set – with all the accessories required for

immediate use: 1850-mAh battery, USB cable, neck strap, communication and charger adapter.

General Guide /Options

Left Side: Headset Jack, Screen, Center Trigger Key, Power on/off

Front View: Status LED, Receiver, Laser-Scanner, Screen Protect Sheet (HA-J90PSS), Microphone, Keyboard

Back View: Laser-Scanner, Lithium-ion battery (HA-D20BAT), Lock Switches, Battery Pack Cover

Right Side: (Labels for right side are not explicitly shown in the diagram)

Accessories:

- AC Adapter (AD-S15050B)
- Mini USB Cable (HA-J80USBM)
- USB and Charging Unit (HA-J65US)
- USB Host Cable (USB mini male to USB female) (HA-J81USBH)
- Dual Battery Charger (HA-D32DCHG)
- AC Adapter (AD-S42120B)

Specifications		
Model		IT-300E-35E
CPU		Marvell® PXA320 624MHz
OS		Microsoft® Windows® Embedded Handheld 6.5 English Version
Memory	RAM	256MB
	ROM	256MB (User area: Approx.120MB)
Display	LCD	3.7 inch VGA (480x640 dots) Blanview® Color LCD with Touch Panel
	Indicator	Indicator 1: Battery charging status Indicator 2: Scanning status
Input	Keyboard	23 keys, numeric (Alphabet) keys, CLR key, execute key, cursor keys, power key, Fn key, F1 to F4 keys, trigger Key
	Touch Panel	Capacitive type
Scanner	Type	CMOS Imager
	Resolution	5 mil (0.127mm)
	Symbology	UPC-A, UPC-E, EAN8(JAN8), EAN13(JAN13), Codabar(NW7), Code39, Interleaved2of5(ITF), MSI, Industrial2of5, Code93, Code128(EAN128), IATA, RSS-14, RSS Limited, RSS Expanded, RSS-14 Stacked, RSS Expanded Stacked
Interface	Bluetooth®	Bluetooth® Version 2.0+EDR compatible
	SD slot	microSD Memory Card (SDHC)
	USB	Version 1.1 (Host/Client)
	Audio	Microphone: Built-in (monaural), Speaker: Built-in (monaural), Headset Jack 3.5mm
Power	Main Power	Lithium-ion battery pack
	Memory Backup	Lithium-ion battery (rechargeable) on board
Durability	Dust/Splash proof	IP54 (compliant with IEC60529 standard)
	Drop Durability	From 5 ft.in height onto concrete floor
	Operating Temperature	-4°F to 122°F (-20°C to +50°C)
Vibrator		Comes standard
External Dimension (WxDxH)		76 x 19.6 x 155 mm (3 x 0.8 x 6.1 inch)
Weight		215g (0.47lb) including HA-D20BAT-A



Windows® is a registered trademark of the Microsoft Corporation, USA. The Bluetooth trademark is owned by Blue-tooth SIG, USA and licensed to Casio Computer Co. Ltd. Other product- or company names are either trademarks or registered trademarks of the respective owners. This publication carries product description without obligation and is not to be seen as a firm offer. Specifications and design are subject to change without notice.

CASIO
CASIO AMERICA, INC.

June, 2011 Printed in the USA